



**Amateur
Beekeepers
Association**
NSW MID NORTH COAST

The Bee Line

**Newsletter of the Mid North Coast Amateur
Beekeeping Association**

Join us on Facebook at http://www.facebook.com/Mid-North-Coast-Amateur_Beekeepers-Association-Inc-333496536672637

February 2021 Newsletter

MNC ABA President's Report

It was nice to see a great roll up of members and visitors to this post-Christmas meeting. Remember, floods prevented us having the December meeting and January is a non-meeting month.

Thanks to Merridy for organising the catered lunch, which arrived exactly on time. Also to Monica, who approached a number of local businesses to sponsor "gifts" for everyone. It is great to have this business community support, particularly in these difficult times, and I encourage members to return the favour by supporting them.

The overcast weather was very kind until the very last moments of the day. A bit of drizzle brought an end to our question and answer session. Don did a great job in answering questions.

Andrea, our Newsletter Editor, will advise on the venue for the next meeting (see elsewhere in this newsletter). If our plan comes to fruition, we will demonstrate how to requeen an aggressive hive. So, bring your bee protection. The Club has a few suits that can be lent on the day, if you do not have one.

This has been a particularly good season for beekeeping. The Club has two extractors that are available for member use. Contact Don Wood. He also looks after our supply of Apithors and foundation wax.

As always, many thanks to those people who quietly help with the smooth running of our Club, for the benefit of all. Warren mowed the lawn at the front for us, opened up the hall and got the toilets working; our librarians; Matt with the trailer; those who assisted with the setting up and packing/cleaning up afterwards. It is greatly appreciated.

Regards,

Allan

Next Meeting -

Date: 14 March 2021

Time: 10 for 10.30am

Host: Darren Barber

Address: 755 Scott's Head Rd
Way Way

Contact: Al Thomas - Ph: 0428 712 587

President:
Secretary:
Treasurer:
Vice Presidents:
Membership Officer:
Public Officer:
Supply Officer:
Newsletter Editor:

Allan Thomas Ph: 0428 712 587, midnorthcoast.president@beekeepers.asn.au
Monica Rich Ph: 0419 298 586, email: midnorthcoast.secretary@beekeepers.asn.au
Merridy Huxley Ph: 0421 690 403, email: midnorthcoast.membership@beekeepers.asn.au
Matt Connell; Don Wood
Merridy Huxley
Monica Rich
Don Wood Ph: 0418 112 516
Andrea Stafford
midnorthcoast.editor@beekeepers.asn.au

Biosecurity Officer:
Social Media Officer:
Librarian:
Ass.Librarian:

John Carroll
Glen Locke
Carina Kerr
Elsbeth Haengi



The Bee Line

Newsletter of the Mid North Coast Amateur Beekeeping Association

HAPPY SNAPS FROM FEBRUARY MEETING



Thanks once again to all those who helped create such a lovely event.



The Bee Line

Newsletter of the Mid North Coast Amateur Beekeeping Association

FRANK'S HIVE HINTS No 13

Sometimes the bees in a hive can change their mood from day to day or even hour to hour. A normally quiet hive can become quite aggressive. There can be many reasons for this.

If your bees are near a cornfield they may obtain an abundant amount of pollen which is not very nutritious. They can collect so much that the combs can be filled within a week at the expense of brood. When pollen production ceases during the morning, bees can become cranky. This can happen with other pollen sources too.

Citrus honey is very special and bees are attracted to the blossoms. During the day when the flowers dry out and the nectar flow stops bees can become aggressive - even hives that are usually quiet. This happens often.

Robber bees can cause stress to hives. They may come around when you open a hive at a time when there is little nectar.

The beekeeper can aggravate the bees. Watch your movements - slow and calm. Don't breathe heavily on the combs. Bees don't like the smell/fumes from petrol, perfume, scented soap, aftershave or fertiliser.

Listen to the sound bees make in the hive. They can indicate a mood. There are different sounds for contentment, swarm preparation and stress. Don't try to work with bees that are aggravated.

Acoustic devices are being used by researchers to listen to bait hives near major ports for signs of stress caused by Varroa mites. Be a good listener.

LOVE THOSE BEES.

(from archive of Frank's Hive Hints by the late Frank Karabaic)

BEES IN THE NEWS

Of course the Mid North Coast is not the only area experiencing bee swarms and calls for help. The head of Melbourne-based Bee Rescue has been quoted as stating that the last two years saw callouts at a fifth of the level he is receiving this year. "This season is extreme", says Frankie Sprangar, who is receiving 25-30 calls a day for extraction assistance. Another Victorian beekeeper and rescuer, Ben Moore, says things are "...absolutely crazy". He is currently working up to 15 hour days removing hives from buildings.

(Source: thenewdaily.com.au)



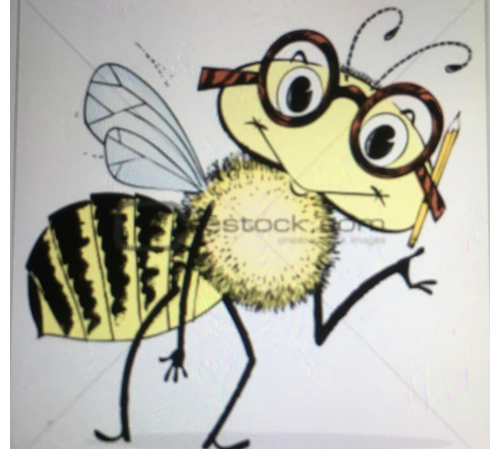
The Bee Line

Newsletter of the Mid North Coast Amateur Beekeeping Association

A QUIZ TO TEST YOUR BEE SMARTS

(Source: empressofdirt.net)

1. How many different species of bees exist worldwide?
 - a) 200
 - b) 2000
 - c) 20,000
2. Where do most bees nest?
 - a) in the ground
 - b) inside flowers
 - c) on tree branches
 - d) in honey combs
3. How many species of honey bees are there?
 - a) 7
 - b) 700
 - c) 7000
4. What is the most common species of honey bee?
 - a) the cowboy honey bee
 - b) the european honey bee
 - c) the pollen honey bee
5. Bumble bees do not sting - true or false?
6. The female bee's stinger is located:
 - a) in the mouth
 - b) on the front legs
 - c) at the lower tip of the abdomen



7. What colour can bees not see?
 - a) blue
 - b) green
 - c) red
8. Which common insect eats bees?
 - a) beetles
 - b) dragonflies
 - c) ladybirds
9. What is the shelf life of honey?
 - a) 3 months
 - b) 3 years
 - c) 30+ years
10. Why do queen bees live longer than other bees in the hive?
 - a) because they practice positive thinking
 - b) because they have a glass of red wine with dinner each night
 - c) because they are fed more than other bees



The Bee Line

Newsletter of the Mid North Coast Amateur Beekeeping Association

BEE SUPPLIES AND SERVICES

Foundation and Apithor

Don Wood has our Club's supplies of Wax Foundation and Apithor SHB traps. Please contact him on pH: 0418 112 516 or by email: rabbittrap2873@yahoo.com . The price of foundation is \$2.60 per sheet. Apithor small hive beetle traps are \$6.50.

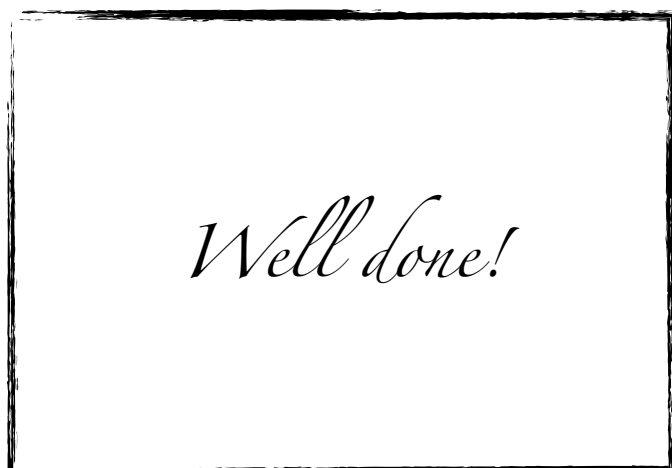
Other Services and supplies

NOTE: The information below is provided to highlight beekeeping services and supplies available in our region. In doing so, we aim to assist in the provision of information to MNCABA members while also supporting local businesses, without specifically endorsing the offerings.

- Michael Worraker - Queen bees for sale: the current breeding stock available is Joe Horner Italian Breeder, Caucasian Breeder, artificially inseminated (AI) Cordovan & AI Italian Breeder queens. Queen cells & nucs will also be available. A new supply of Agrisea bee feed has also arrived. Ph: 0408 293 031
- Ross Wood - Mated queens and nucs (Grafton). Ph: 0421 817 710
- Steve Fowler - All manner of beekeeping equipment for sale. Steve and Janet usually turn up at meetings with a ute full of gear. To pre-order call 0418 412 621
- Glenn Locke - Mt Coramba Apiculture – One day beekeeping workshops and Flow-hive mentoring: www.oraravalleyhoney.com.au Ph: 0459 066 297
- Coffs Beekeeping Supplies – Ph: 0447 308 906. Judith Webster & Serge Golovin specialise in polystyrene beehives, and provide a wide range of hive wear, beekeeping tools & equipment www.coffsbeekeepingsupplies.com.au Ph: 0447 308 906. They have moved to new premises at 23 Cork Dve, Woolgoolga. M-F 8.30-5.30 Sat 9-1. Email: coffsbeekeepingsupplies@gmail.com
- Glenn Leet - Nucs and queen cells: glenn@inspiremenow.com.au Ph: 0428 536 021
- Di McQueen and Scott Richardson - Queens, nucs, hives and beekeeping equipment – www.honeybeehives.com.au Ph: 0411 097 275
- Steve Hayes - Little Star Bees - Nucs and hives plus native bee courses. Ph (02) 6564 8737

QUIZ ANSWERS

1. c
2. a
3. a
4. b
5. false
6. c
7. b
8. b
9. c
10. c





The Bee Line

Newsletter of the Mid North Coast Amateur Beekeeping Association

NEXT MEETING

Date: 14 March 2021

Time: 10 for 10.30am start

Location: 755 Scotts Head Rd
Way Way

Directions: From north of Macksville: take Bald Hills Rd exit off the M1
turn right at roundabout and cross over M1
turn left at next roundabout onto Giinagay Way
turn right onto Scotts Head Rd
turn right onto dirt road just past Landy Drive

BYO: Chair, food, drinks, hat, bee protection gear.

COVID-19 SAFETY MEASURES FOR OUR MEETINGS (current 18/02/21)

COVID-19 remains a risk, so we must continue to take responsibility in protecting one another when gathering for meetings. The following steps are to be followed as a consequence:

- If you feel unwell, and/or have symptoms, get tested and stay at home.
- When you arrive, use the hand sanitiser provided – often – and for a period of 20 seconds each time. Avoid touching your eyes, nose and mouth. If your hands are visibly soiled you need to wash with soap and water.
- Record your name and contact details in the book provided, using your own pen (just like you do when visiting cafes, restaurants, pubs). This is to allow for contact tracing if needed, and is vitally important to safeguard our friends, family and healthcare workers.
- Practice social distancing: you must stay 1.5m away from others. Feel free to wear a mask

Which bee gives you a second chance?

The plan bee