

# GOULBURN DISTRICT BEEKEEPERS CLUB

SEPTEMBER 2022

THE LATEST NEWS, VIEWS, AND ANNOUNCEMENTS

## INSIDE

### NEXT MEETING DATE:

Tuesday 20<sup>th</sup>  
SEPT 2022  
@7:30pm

**FACE TO FACE**  
Goulburn  
Workers Club

### DPI NEWSLETTER

PRESIDENTS  
COMMENTS

THANKYOU

NEXT MEETING

SOCIAL MEDIA

NEXT MEETING  
TOPIC

FROM OUR  
MEMBERS

WORKSHOP

BIOSECURITY

SOCIAL MEDIA

ABOUT REGIONAL

MEMBERSHIP

MERCHANDISE

BOOKE REVIEW

RECIPE

LINKS

CONTACTS

## COMMITTEES COMMENTS

BY RENATE BARRETT PRESIDENT

Dear Members,  
Hello and welcome to our September Newsletter.

Last month's members meeting was very well attended despite the weather and the presentations were full of valuable information.

Firstly, John presented important information regarding Varroa mite and explained our individual obligations. **Included in this Newsletter** you will find a **new regular page** regarding pest and disease control **by our Biosecurity Officer**.

Secondly, Jane presented a comprehensive demonstration of hive equipment that would need to be delivered prior to swarming if you wish to obtain a new swarm. These include a hive box with a full set of complete frames, a hive box bottom and lid, one beehive Emlock with either metal or nylon strap, and the means to securely close the entrance for pickup after your new swarm has been placed into your hive box.

**Reminder: Please renew your membership for the 2022/2023 season.**

As a member you will receive your ABA membership card and pack including your Beekeeper's Log Book, drone uncapping fork with instructions, and a bi-monthly ABA Newsletter. The latest ABA Newsletter has recently been distributed and I highly recommend you read through it as it's packed with vital beekeeping information.

See you soon,  
Renate Barrett  
[Goulburn.president@beekeepers.asn.au](mailto:Goulburn.president@beekeepers.asn.au)





Thank you, Iain!  
Iain was our club President for two years, some of it during very trying times due to Coronavirus. During this time the committee and members were not always able to meet face-to-face but, thanks to Iain, the committee met regularly online to ensure ongoing communications and management our internal club matters. Iain displayed dedication and care towards the club and its members and was always willing to assist with the tasks at hand. Iain is also a prolific honey producer and we all hope that he will continue to sell his products at our club stalls. We all wish Iain the very best and look forward to catching up during General Meetings, Workshops and other events. As a small token of our appreciation, and on behalf of the Goulburn District Beekeeping Club, I was delighted to present Iain with a Bunnings Gift Card.

## NEXT MEETING TOPICS

### TOOLS AND TRICKS OF THE TRADE

Your next monthly members meeting will take place at the **Goulburn Workers Club**

**Tuesday 20<sup>th</sup> Sept at 7:30pm.** Every 3<sup>RD</sup> Tuesday of the month

#### **The topic: Tools and Tricks of the Trade**

Please bring along any special tools that you use for beekeeping purposes. Perhaps you have designed or repurposed a tool that really works for you. In this case, we would love to see it. Do you have any special tips and tricks up your sleeve that could be valuable for us all to know? Anything quirky or unusual that you find works really well for you? We all look forward to hearing about it.

**FACE TO FACE** Lift is under repair, meeting to be held on ground floor in the area that looks over the carpark.

## FROM OUR MEMBERS

Susie, one of our club members, recently answered the ABA's call for Volunteers to assist Emergency Response teams in the Maitland/Hunter and Grafton/Coffs Harbour areas.

Thank you, Susie, for sharing your experience.

*I recently spent five days on the Central Coast as a volunteer with the Varroa mite incursion response team – a multi-agency response consisting of DPI, RFS, LLS, Fisheries, National Parks and volunteer beekeepers from across Australia (including Western Australia and Darwin).*

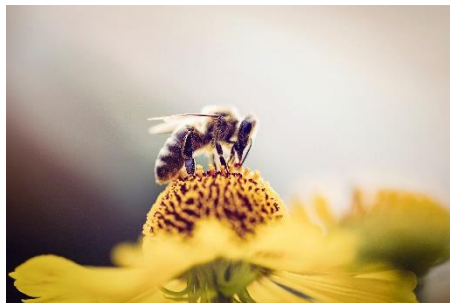
*Sadly, the timing of my deployment meant I was part of the euthanising operation in the Red Zone around Gosford. It was a pretty challenging time with our days starting around 2pm and finishing around 11 or 11.30pm depending on the weather, our task list and the kind of terrain we were going to be working in. One particularly horrendous day started with a thunderstorm early afternoon, including a hail shower, and ended up with our team slogging through a very wet and muddy paddock then climbing over an electric fence to get to the hives. A very intense evening!*

*I got stung on the face on my first night and I knew it wasn't going to be pretty – the first time I got stung on the face I was almost unrecognisable due to the swelling and it was pretty much the same this second time with my left eye swollen closed and some very concerned officials when I turned up for my second day!*

*It was heartbreaking meeting the beekeepers whose bees we had to destroy, particularly if they'd had no evidence of Varroa, however they were all very stoic and understood the reasoning behind such a blanket approach. I think they also took heart in the fact that it was being done by other beekeepers who were passionate about beekeeping and could empathise deeply with them.*

*I met some terrific beekeepers and only being a novice myself, tried to soak up as much information as I could in the circumstances. It was interesting seeing other people's hives and set-ups as well and, on some occasions, getting a good understanding of what not to do.*

*I would definitely volunteer again if I could get my family to agree to another week's absence! Despite the circumstances there was a great camaraderie amongst the different agencies and a real sense of importance about the nature of the work we were doing in a bid to protect our multi-million-dollar industry.*



## WORKSHOP

BY GARY POILE

### **BEEKEEPING WINTER WORKSHOP - TAKE TWO.**

**POILE'S HONEY** extends a warm winter welcome to members of the **Goulburn District Bee Club (GDGC)** to attend a club beekeeping workshop:

**Where:** 3 Goulburn Street COLLECTOR.

**When:** Sat 24th September

**Time:** 9:30 am for 10:00 am start.

**GDGC** members are invited to attend a workshop at **Poile's Honey Shed** on 24/09/22.

Members will be instructed and supervised in the construction of hive material, including assembling of frames bee boxes, hive bases and lids. No experience is necessary. The workshop is about learning how to assemble hive material and at the same time providing cost effective hive kits for members of the **GDGC**.

The aim of the workshop will be to assemble a number of 8 frame single box hive kits that will be available for members of the GDGC to purchase for swarm catching in the coming spring.

Each kit includes: 1 x lid, 1 x base, 1 x box and 8 x frames with plastic foundation.

The material is being provided at the flat-pack rate of \$125 for each kit and can be picked up at the end of the workshop and taken home after it has been assembled by the workshop attendees.

**Poile's Honey** will provide all necessary tools and hardware to assemble the material, but members are welcome to bring any jigs or special tools they have developed to show other members and share their ideas and inventions!

For catering purposes or to put your name on a swarm box kit or to enquire about purchasing additional material, please email Gary at:

[poileshoney@hotmail.com](mailto:poileshoney@hotmail.com)

**Please RSVP by Sat 20 Aug.**

#### **Itinerary:**

**9:30** Arrive at 3 Goulburn St, COLLECTOR for coffee, induction and instruction.

**10:00** Workshop 1: frames

**11:00** Workshop 2: boxes or

**12:00** Lunch. BBQ provided by GDGC.

**13:00** Workshop 3: lids and bases.

**14:00** Field trip to a nearby reserve for a "walk'n'talk" session to identify local eucalypts and discuss their value to beekeeping in the region.

**15:30** All done! Pack up, clean up, load up and quick debrief/feedback.

**16:00** Elvis has left the building.

**Eight frame single box flat pack at special price of \$125 includes:**

1 x Premium full-depth box, dovetail corners and made from plantation-grown New Zealand radiata pine.

1 x Migratory lid: 10mm Weathertex board for insulation, with tin cover for extra weather protection with 4 vents to regulate heat inside the hive.

1 x Traditional base: 10mm Weathertex board with 25mm riser, two white cypress cleats raise the hive from the ground, providing extra resistance to rot and termites.

8 x Full depth premium frames (grooved bottom bars) with wax rolled plastic foundation.



Width: 353 mm  
Depth: 242 mm

21.8



Box - wood - premium -  
unassembled - full depth - 8  
frame

Hive Lid Migratory- unassembled  
8 Frames



Traditional Beehive base kit -  
unassembled 8 Frames DIY



Foundation plastic, full depth



Frame, double-groove,  
unassembled Flat Pack



## BIOSECURITY

### VARROA MITE BY JOHN SCOTT

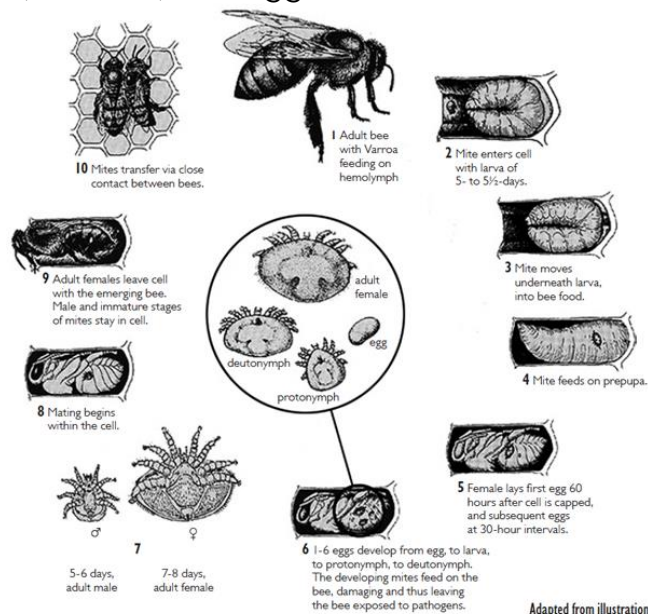
For my first biosecurity spot I thought I would cover varroa mites. They are obviously topical at the moment. Rather than go over all the testing and treatment information I thought I would just talk about what varroa might are and what their effect on a beehive is to help create a better understanding of them.

What are Varroa Mites?

Varroa mites are parasitic mite of the honey bees *apis mellifera* and *apis cerana*. *Apis cerana* is the natural host of varroa mite in its native home of South East Asia.

There are two species of varroa mite. They are varroa destructor and varroa jacobsoni. Varroa Jacobsoni does host on *apis cerana* but not usually on *apis mellifera*. *Apis destructor* hosts on both *apis cerana* and *apis mellifera*. This is the mite that has been detected in Newcastle.

varroa mites are arachnids that are about the size of a sesame seed and coloured red. They feed on the lipids of the honey bees. The female mites lay inside the brood cell of the bees with a preference for drone brood due to the longer period of time drones spend as a capped cell. The female varroa lays one male egg (unfertilised) and up to five female eggs (fertilised). The eggs hatch in the brood cell and feed on the developing



Adapted from illustration by B. Alexander

bee and when developed the male mates with his sister female mites. The female mites then emerge from the cell with the developed bee. The male dies in the brood cell. The cycle then continues.

What do the varroa mites do?

Firstly, the mite's consumption of the fat body weakens both the adult bee and the larva; in particular, it significantly decreases the weight of both the hatching and adult bee.

Additionally, infected adult

worker bees have a shorter lifespan than ordinary worker bees, and they furthermore tend to be absent from the colony far more than ordinary bees, which could be due to their reduced ability to navigate or regulate their energy for flight.

Secondly, the mites are vectors of various viruses, in particular the deformed wing virus. This obviously has a significant effect on the hive as bees with deformed wings can't meaningfully forage for food. With less ability to forage a hive is likely to starve and eventually die out. The hive is then likely to be robbed of any remaining honey by other hives with the mites attaching to the robber bees and being taken to a new hive to continue on.



While all this may sound a bit new and scary the DPI and Beekeepers have been working hard on surveillance and eradication with the eradication stage well advanced. The relaxing of restrictions by the DPI demonstrates their confidence that they are on the right path to eradicate the mites. My time in Newcastle taking part in the operation buoys my confidence also and I am certain we will see a day when we can say the mite is gone from Australia once again.

If you have any problems or concerns please contact me at [goulburn.biosecurity@beekeepers.asn.au](mailto:goulburn.biosecurity@beekeepers.asn.au)

## SOCIAL MEDIA

Come have a look at our new group on [facebook here](#) . And don't forget about our website and forum [here](#).



## ABOUT REGIONAL ARTICLE

Below is the link to a fantastic article in About Regional about our club and readying for swarm season. Thankyou to all those that made this possible.

<https://aboutregional.com.au/goulburn-beekeepers-ready-for-swarming-season/>



## MEMBERSHIP OFFICER

JANE SUTTLE

### Have you renewed your membership?

Membership seems to be in a bit of a muddle at the moment!! It is all administered by ABA and as you are all well aware the Varroa Emergency has been taking up huge amounts of the attention and time of the ABA administrators. So I am trying to be patient and ask you to try and be patient too. I have asked for clarification, but it looks to me as though we are changing the membership records from one system to another and we are a bit caught in the middle.

But here is an update as I see it at the moment:

At the end of last year (30th June ) we had 94 members. Of those 44 have currently renewed which leaves around 50 still to renew. Please go to your ABA email sent at the beginning of August and click on the link to renew. To find this email simply search for **Amateur Beekeepers Australia Membership renewal invitation** in your email search box.

I would also like to welcome 4 new members to the club.

**Cara Ramson, Peter Czeti, Angus Tye and Venkaatesh Bidarkal.** Please look out for these people at our meetings and make them welcome!!





## OPPORTUNITY FOR A CLUB MEMBER TO SELL HONEY

**I suggest if you do you contact Renate 0447734879 or myself, Jane 0413638089 and we can help you with Club equipment - table, gazebo or at least a banner of some sort.**

The Nature Conservation Council of NSW is organising for a state wide Picnic Day in various locations on Sunday 16<sup>th</sup> October 2022.

FROGS Landcare and Goulburn Field Naturalists are hosting a gathering at the Goulburn Wetlands and inviting like-minded groups with an interest in environmental issues to join in on the day. 10am - 3 pm.

Plans have not been finalised, but we anticipate groups will put their banners on the fence, everyone bring their own picnic lunch, chairs etc. Pop-up stalls could be set up to discuss issues, distribute pamphlets etc.

The main aim will be to gather together , enjoy a social time and make it low-key, so that if the weather doesn't cooperate, it will be easy to scale down or abandon.

Let me know if your group is interested and we can add you to the advertising. Check out NCC Website [https://nature.org.au/goulburn\\_picnic\\_for\\_nature](https://nature.org.au/goulburn_picnic_for_nature) for their information.

Also let me know if you are involved in other groups who may be interested. It would be best if the Picnic was a-political.

Cheers

Heather West

President  
FROGS Landcare

## MERCHANDISE

Don't forget our Bee things with our club's logo on them. Some great items can be purchased [here at redbubble](#) .



## BOOK REVIEW

BY SIMON CHRISTOPER

Our club has a small collection of bee books that members are welcome to borrow. Come along to the monthly meeting at Goulburn Workers Club and browse the collection.

Here is a short review of one of our titles.

### **Natural Beekeeping with the Warre Hive**

Northern Bee Books

Published 2013

Written by David Heath

David Heath is a UK based author with a science background in bio chemistry. He began his beekeeping journey at home with traditional Langstroth hives and then experimented with Warre Hives. At the time of writing, he had 15 Warre hives and a few traditional hives.

The Warre Hive or 'the People's Hive' was developed by Frenchman Abbe Emile Warre (1867-1951). It's a popular choice for natural beekeeping, especially in colder climates. Warre's one size box (L300 x W300 x H200mm internal with 20mm walls) has top bars, natural comb and insulating quilt. It creates ideal conditions for colony vitality and survival, as well as reducing consumption of honey stores in winter.

He explains that a hive of several boxes has no queen excluder, so she is free to move around the hive. The oldest comb is on top so this is completely harvested with a new box placed on the bottom of the stack. Natural beekeepers harvest less honey from their hives than traditional hives and claim their bees are less interrupted. Others have argued that placing a new box at the bottom of the hive would present a major interruption and there is also the challenge of lifting multiple boxes to insert the new one. The book has several examples of mechanical lifts to do this.

In summary this is a practical, clearly laid out manual containing all the information you need to build and run a Warre hive. Topics include tools, locating, obtaining and hiving bees, monitoring, feeding, wintering, enlarging the hive, harvesting and extracting honey with simple kitchen equipment.



## RECIPE

### NO BAKE MONSTER COOKIE GRANOLA BAR BITES

<https://lml.org/no-bake-monster-cookie-granola-bar-bites/>

#### INGREDIENTS

- 1 1/4 cups old fashioned oats
- 1/2 cup creamy peanut butter
- 1/4 cup honey
- 1/3 cup mini m&ms
- 1/3 cup mini chocolate chips

#### METHOD

- Dump all your ingredients into a medium sized bowl.
- Stir well for a few minutes until everything is combined and oats and chocolate pieces are coated with wet ingredients.
- Stir well for a few minutes until everything is combined and oats and chocolate pieces are coated with wet ingredients.
- Roll mixture into small balls (about 1 - 1 and 1/2 inches in size) carefully. (Wash your hands occasionally to prevent mixture from sticking to them too much)
- Place bites on a cookie sheet lined with parchment paper.
- Allow to set in the fridge till solid.
- Store in fridge in an airtight container or ziplock bag



## LINKS TO EXPLORE

Department of Primary Industries: Varroa mite emergency response  
<http://dpi.nsw.gov.au/varroa>

The Goulburn District Beekeepers Club website  
<https://www.goulburnbeekeepers.asn.au/>

Amateur Beekeepers Australia website  
<https://www.beekeepers.asn.au/>

**Irradiation treatment Sydney**  
<https://steritech.com.au/contact/>

This is your 'Go To' place for Australian info on pests and diseases  
<https://beeaware.org.au/>

Mite Fight - Honey bee breeders are stepping up efforts to create colonies that can resist the deadly Varroa parasite  
<https://www.science.org/doi/epdf/10.1126/science.365.6451.310>

Free online course Varroa mite training  
<https://courses.tocal.nsw.edu.au/courses/varroa-mite-online-training>

SBS Documentary  
Episode 6 of the series 'Devoured' - Season 1, entitled 'Great Hive Heist'  
Subject: Beekeeping in California and the problems they face.  
You will need a subscription to SBS On Demand to watch it.  
<https://www.sbs.com.au/ondemand/program/devoured>

The Energy provider Hanwha published the below article which may be of interest to you.

Title: Connecting Hives, Connecting Lives: How Saving Bees with Solar Panels Protects Pollinators, People and the Planet.  
[https://www.hanwha.com/en/news\\_and\\_media/stories/sustainability/connecting-hives-connecting-lives-how-saving-bees-with-solar-panels-protects-pollinators-people-and-the-planet.html](https://www.hanwha.com/en/news_and_media/stories/sustainability/connecting-hives-connecting-lives-how-saving-bees-with-solar-panels-protects-pollinators-people-and-the-planet.html)

How to light your smoker (by Flow Hive)  
[https://www.honeyflow.com.au/blogs/livestreams/how-to-light-your-smoker-210210?\\_pos=2&\\_sid=d842a5ad7&\\_ss=r&utm\\_source=Campaign&utm\\_medium=email&utm\\_campaign=Seasonal%20campaign%20%7C%20SH%20%7C%20Newbee%20%7C%20E6%20%7C%20220424&\\_kx=0nJFBuAjqCKvjKtxUAmhKZk5d2xfiMcbUtE0I30f7jE%3D.Xf8K9S](https://www.honeyflow.com.au/blogs/livestreams/how-to-light-your-smoker-210210?_pos=2&_sid=d842a5ad7&_ss=r&utm_source=Campaign&utm_medium=email&utm_campaign=Seasonal%20campaign%20%7C%20SH%20%7C%20Newbee%20%7C%20E6%20%7C%20220424&_kx=0nJFBuAjqCKvjKtxUAmhKZk5d2xfiMcbUtE0I30f7jE%3D.Xf8K9S)

## GOULBURN DISTRICT BEEKEEPERS CLUB CONTACTS

### YOUR GDBC COMMITTEE MEMBERS 2022/23

President                      Renate Barrett  
[Goulburn.president@beekeepers.asn.au](mailto:Goulburn.president@beekeepers.asn.au)

Vice President                      John Scott  
[Goulburn.vp@beekeepers.asn.au](mailto:Goulburn.vp@beekeepers.asn.au)

Biosecurity Officer      John Scott  
[Goulburn.biosecurity@beekeepers.asn.au](mailto:Goulburn.biosecurity@beekeepers.asn.au)

Secretary                      Simon Christopher  
[Goulburn.secretary@beekeepers.asn.au](mailto:Goulburn.secretary@beekeepers.asn.au)

Treasurer                      Rose Nixon  
[Goulburn.treasurer@beekeepers.asn.au](mailto:Goulburn.treasurer@beekeepers.asn.au)

Membership Officer              Jane Suttle  
[Goulburn.membership@beekeepers.asn.au](mailto:Goulburn.membership@beekeepers.asn.au)

Editor                      Sandra Mason  
[Goulburn.editor@beekpeepers.asn.au](mailto:Goulburn.editor@beekpeepers.asn.au)

Committee Member              Michelle White  
[Goulburn.committee2@beekeepers.asn.au](mailto:Goulburn.committee2@beekeepers.asn.au)

GDBC Website  
<http://www.goulburnbeekeepers.asn.au>  
<https://www.beekeepers.asn.au/goulburn>

GDBC <https://www.facebook.com/Goulburn-District-Beekeepers-Club-100347582559459>

[www.goulburnbeekeepers.asn.au](http://www.goulburnbeekeepers.asn.au)

[info@goulburnbeekeepers.com.au](mailto:info@goulburnbeekeepers.com.au)

PO Box 1120  
GOULBURN, NSW 2580





---

