



**Amateur  
Beekeepers  
Association**  
NSW PARRAMATTA

# September 2020

## Newsletter of the Parramatta Amateur Beekeepers Inc

For information on the ABA including joining (re-joining) go to:

[www.beekeepers.asn.au](http://www.beekeepers.asn.au)

To go to the Parramatta Branch Page, click on <https://goo.gl/i4q87x>

Join us on Facebook



<https://www.facebook.com/groups/parramattabeekeepers/>

## Welcome to the 227 new and renewing members!

### In this issue

### Page

<i>September presentation – All you need to know about swarms and being swarm ready</i>	2
<i>President's report</i>	2
<i>Executive report – 19 August 2020</i>	5
<i>Beginning in Bees (on-line) training has arrived!</i>	6
<i>Feature – When to open your hives following winter</i>	7
<i>Book donation – Queen Spotting</i>	8
<i>Free bee biosecurity training course</i>	8
<i>October is AFB Awareness Month</i>	9
<i>AFB near me</i>	10
<i>Do you have a warre or flow hive?</i>	10
<i>Are you swarm ready?</i>	11
<i>Meet my apiary</i>	12
<i>Club shop</i>	13
<i>Handy contact details</i>	14
<i>What's on in 2020</i>	15



**Honeybees communicate with one another by dancing!**



**OCTOBER IS AFB AWARENESS MONTH!**

President: Robyn Alderton e: [parramatta.president@beekeepers.asn.au](mailto:parramatta.president@beekeepers.asn.au)  
Secretary: Dave Wilson e: [parramatta.secretary@beekeepers.asn.au](mailto:parramatta.secretary@beekeepers.asn.au)  
Treasurer: Andrew Bardsley e: [parramatta.treasurer@beekeepers.asn.au](mailto:parramatta.treasurer@beekeepers.asn.au)  
*Newsletter deadline to submit material – 20<sup>th</sup> of each month*

## **September presentation – All you need to know about swarms and being swarm ready**

*By: Peter Clarke, PAB Executive*

For our September on-line event, we are pleased Peter will be presenting to us 'all you need to know about swarms and being swarm ready'.

*Note: All members have received an email invite to the September meeting. Follow the directions and you are on your way to being present for Peter's Presentation.*

## **President's report**

*By Robyn Alderton, President*

Thank you to all members who dialled in to Google Meets for our second on-line meeting held on Wednesday, 12 August 2020.

If you would like to dial in to future meetings but are unsure, please contact one of your friendly Executive members for assistance prior to the next scheduled on-line meeting.

If you would like to view the recording of the August Presentation, by Professor Andrew Barron, see below.

[Click here for Professor Andrew Barron's August Presentation](#)

Members have been invited directly through email, however, you can also click on the link below at 7.30 pm on 9 September for the September Monthly Club (ON-LINE) event.

[Click here for the September Presentation](#)

Please join us for our monthly on-line meetings. I look forward to seeing you.

Kind regards Robyn Alderton on behalf of your Executive

Your Executive continues to be hard at work. Please refer to the Executive Report for a monthly summary.

Reminder: With the intent of maintaining a relationship with our members, we are running a (free) raffle.

Our Club Raffle is a means of maintaining relationships with our members during the COVID-19 restrictions. Please note that tickets for this raffle cannot be purchased and members must either nominate themselves or be nominated by another member, but only once (a member cannot be nominated by two people for the same act of kindness). To be eligible to be in the draw, members can -

1. purchase goods through the club shop, earning one raffle ticket for each \$10 spent (or part thereof - \$7.50 being the rounding figure), eg, a purchase of \$18 will earn two tickets.
2. conduct a random act of beekeeping related kindness, either for the benefit of another member or the club itself, earning one raffle ticket for each occasion/nomination.

All appropriate nominations received by the President will have tickets allocated and the raffle will be drawn at the [December on-line meeting](#).

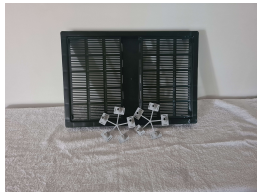
See below for inspiration – the list is continuing to growing!

<b>Nominee</b>	<b>Reason</b>	<b>Nominator</b>
Marina Tuskan	For reviewing the monthly Newsletter	Robyn Alderton
Agapi Tsampazi	For purchases from the club shop	Lod Porretta
Greg Williams	For purchases from the club shop	Lod Porretta
Daniel LaGuidara	For purchases from the club shop	Lod Porretta
Andrew Bardsley	For purchases from the club shop	Lod Porretta
James Lowe	For purchases from the club shop	Lod Porretta
Sandy Harrison	For providing a Newsletter article	Robyn Alderton
Veronica Roelink	For advising an 'In the Media' story about bees	Robyn Alderton
Jamie Thompson	Donation of a book 'Queen Spotting' to the club library	Robyn Alderton
Brian Luttrell	For advising an 'In the Media' story about bees	Robyn Alderton
<i>Veronica Roelink</i>	<i>Not for the mumma joke however for her story on 'Managing a Warre Hive'.</i>	<i>Robyn Alderton</i>
<i>Guy Challis</i>	<i>For supplying his Beehive Store photo</i>	<i>Robyn Alderton</i>
<i>Jamie Thomson</i>	<i>For providing a Newsletter article</i>	<i>Robyn Alderton</i>
<i>Jamie Thomson</i>	<i>For providing a Q&amp;A for the Newsletter</i>	<i>Robyn Alderton</i>
<i>Margaret McGregor</i>	<i>For submitting another photo for the 2021 calendar</i>	<i>Robyn Alderton</i>
<i>Guy Challis</i>	<i>For forwarding the details of a BBC article "A Bee C: Scientists translate honeybee queen duets"</i>	<i>Robyn Alderton</i>
<i>George Gourlay</i>	<i>For submitting a Newsletter article</i>	<i>Robyn Alderton</i>
<i>Jamie Thomson</i>	<i>For providing the correct reason how a 'super' got its name</i>	<i>Robyn Alderton</i>
<i>Margaret McGregor</i>	<i>For providing the correct reason how a 'super' got its name</i>	<i>Robyn Alderton</i>
<i>Timothy Kotlar</i>	<i>For providing the correct reason how a 'super' got its name</i>	<i>Robyn Alderton</i>
<i>Norm Webb</i>	<i>For submitting a Newsletter article warning members about 'brood theft'</i>	<i>Robyn Alderton</i>
<i>Arthur Garske</i>	<i>For providing the correct reason how a 'super' got its name</i>	<i>Robyn Alderton</i>
<i>Marina Tuskan</i>	<i>For providing the correct reason how a 'super' got its name</i>	<i>Robyn Alderton</i>
<i>Marina Peterson</i>	<i>For providing the correct reason how a 'super' got its name</i>	<i>Robyn Alderton</i>
<i>Guy Challis</i>	<i>Raised an important issue about a new kind of comb that is not really comb.</i>	<i>Dave Wilson</i>
<i>Timothy Kotlar</i>	<i>For submitting another photo for the 2021 calendar.</i>	<i>Robyn Alderton</i>
<i>Guy Challis</i>	<i>In celebration of World Bee Day - for advising the Executive of the availability of a documentary about bees (supported by the When Bee Foundation). The ABA were contacted and requested to communicate this information to all ABA members.</i>	<i>Robyn Alderton</i>
<i>Dave Wilson</i>	<i>For the development of online Beginning in Bees Training material.</i>	<i>Robyn Alderton</i>
<i>Margaret McGregor</i>	<i>For developing a Frame Making video to be used for online training.</i>	<i>Robyn Alderton</i>
<i>Malcolm McGregor</i>	<i>For developing a Frame Making video to be used for online training.</i>	<i>Robyn Alderton</i>
<i>Bill Dick</i>	<i>June Newsletter contributor</i>	<i>Robyn Alderton</i>
<i>Arthur Garske</i>	<i>June Newsletter contributor</i>	<i>Robyn Alderton</i>

<b>Nominee</b>	<b>Reason</b>	<b>Nominator</b>
<i>Steve Alderton</i>	<i>June Newsletter contributor</i>	<i>Robyn Alderton</i>
<i>Marina Tuskan</i>	<i>Completed the Find-a-Word puzzle</i>	<i>Robyn Alderton</i>
<i>Marina Tuskan</i>	<i>Pointed out the errors in the Find-a-Word puzzle</i>	<i>Robyn Alderton</i>
<i>Arthur Garske</i>	<i>Completed the Find-a-Word puzzle</i>	<i>Robyn Alderton</i>
<i>Arthur Garske</i>	<i>Tenacity in an attempt to find the word 'blue' in the Find-a-Word puzzle</i>	<i>Robyn Alderton</i>
<i>Timothy Kotlar</i>	<i>Completed the Find-a-Word puzzle</i>	<i>Robyn Alderton</i>
<i>Timothy Kotlar</i>	<i>Pointed out the errors in the Find-a-Word puzzle</i>	<i>Robyn Alderton</i>
<i>Gary Christoffel</i>	<i>Act of kindness - provided beekeeping advice to new members</i>	<i>Marina Tuskan</i>
<i>Marina Tuskan</i>	<i>Act of kindness - volunteered to review PAB materials</i>	<i>Robyn Alderton</i>
<i>Robbie Ashhurst</i>	<i>Random act of kindness - tidied the apiary</i>	<i>Robyn Alderton</i>
<i>Peter Clarke</i>	<i>Col Pulling quiz participant</i>	<i>Robyn Alderton</i>
<i>Steve Alderton</i>	<i>Col Pulling quiz participant</i>	<i>Robyn Alderton</i>
<i>Andrew Bardsley</i>	<i>Col Pulling quiz participant</i>	<i>Robyn Alderton</i>
<i>Sheryl McIntosh</i>	<i>Col Pulling quiz participant</i>	<i>Robyn Alderton</i>
<i>Guy Challis</i>	<i>Col Pulling quiz participant</i>	<i>Robyn Alderton</i>
<i>Norm Webb</i>	<i>Col Pulling honey entries</i>	<i>Robyn Alderton</i>
<i>Dave Wilson</i>	<i>Act of kindness - worked in the apiary</i>	<i>Robyn Alderton</i>
<i>Arthur Garske</i>	<i>Act of kindness - worked in the apiary</i>	<i>Robyn Alderton</i>
<i>Guy Challis</i>	<i>Act of kindness - worked in the apiary</i>	<i>Robyn Alderton</i>
<i>Timothy Kotlar</i>	<i>For submitting a photo for the 2021 calendar</i>	<i>Robyn Alderton</i>
<i>Bill Dick</i>	<i>Newsletter contributor</i>	<i>Robyn Alderton</i>
<i>Arthur Garske</i>	<i>Newsletter contributor</i>	<i>Robyn Alderton</i>
<i>Guy Challis</i>	<i>For submitting photos for the 2021 calendar</i>	<i>Robyn Alderton</i>
<i>Bill Dick</i>	<i>For submitting a swarm/nest photo for the Newsletter</i>	<i>Robyn Alderton</i>

*Note: Details in 'blue italics' above were published in the May and June Newsletters*  
**New nominees are shown in Black type.**

Prizes on offer are:

<b><i>Decapping pinwheel</i></b>	<b><i>Vented escape board</i></b>	<b><i>A bucket strainer</i></b>
		

All nominations to be sent to the President. The raffle will be drawn at the December on-line meeting. The plan was to draw the raffle at the first club event where we could meet at the school, however, that does not look like any time soon. We will consider starting a new raffle for 2021. Tickets cannot be purchased for this raffle.

***Stay safe and stay connected and I look forward to catching up with you on-line!***

## **Executive report – 19 August 2020**

*By Dave Wilson, Secretary*

The PAB August Executive meeting was held as a virtual meeting on the evening of 19 August 2020.

Present were Robyn Alderton, Steve Alderton, Sandy Harrison, Margaret McGregor, Malcolm McGregor, Lod Porretta, Dave Wilson and Peter Clarke. Apologies received from Andrew Bardsley, Arthur Garske and Bill Dick.

As the Treasurer was absent no financial reports were received.

Due to COVID-19, the school has placed restrictions on our attendance, resulting in several items again being carried forward without action. These include electrical testing and tagging of our mains operated equipment and the library cull of old books. The matter of how the club transfers boxes of honey frames from the apiary to the extracting sheds was referred to the ABA for insurance considerations. A reply has been received but it is being clarified. This item is a responsibility of Dave Wilson and Steve Alderton.

A thank you gift for a member who has organised the sale of a large quantity of club honey is being organised by Robyn Alderton.

Robyn Alderton has clarified how the club intends to provide ongoing support to the school, including:

- provision of 48 jars of honey for canteen sale
- continuation of Year 7 Bee Experience program
- donation of prizes for the school award and presentation evening
- provision of a beekeeping mentoring program for selected students.

The new "COVID-19 compliant" beekeeping course is in operation with the first group of 5 students. The course was very popular with the available places being filled within one hour of notification of the course. Robyn Alderton, Dave Wilson and Malcolm McGregor are responsible for this initiative.

Sandy Harrison and Peter Clarke are completing the planning to ensure that the club swarm collection system works well when the swarm season commences. Bill Dick will also be involved. Peter and Lod have organised sufficient nucleus boxes. Sandy is making sure that systems involved in collecting and allocating swarms are in place. This season's swarms will be supplied in nucleus boxes on new foundation frames. The four frames and bees are retained by the member with only the nucleus box to be returned. The cost for new members (who have completed a form of training) will be \$85 and for regular members \$110.

The distribution of PAB training videos has been held over pending editing.

Andrew Bardsley is responsible for this work.

Due to school requirements our storage area in the large shed has been moved to the southern end. This will be reviewed by Peter Clarke and Lod Porretta. Peter and Lod have also installed a new storage cupboard and a stainless steel bench in the extracting room.

There was a great presentation at the recent virtual club meeting by Professor Andrew Barron with 47 members participating. Future presentations include October – Swarms – Peter Clarke and, November – Queens – Dave Wilson.

The club has been notified by the school of restrictions relating to visits by Executive members:

1. Numbers to be kept to a minimum, 1 or 2, including to the club shop.
2. A sign-in book to be kept in the shop for visitor details and contact tracing.
3. Visitor book in school admin office to be signed during visits in school hours.

Tickets have been issued to members who have contributed to the club during “COVID-19” restrictions. This raffle will be drawn at the virtual Christmas party in December. This virtual party will be Christmas themed. More details from Robyn Alderton later about this event.

The ABA has supplied images representing frames in a hive. These will be assembled by Sandy Harrison for use at training and public events.

Margaret and Malcolm McGregor will attend a biosecurity training event later in the year.

The club apiary will need inspection soon. Dave Wilson will organise this.

---

***Club meeting records are maintained by Dave Wilson. Should you require further information, please contact Dave on [parramatta.secretary@beekeepers.asn.au](mailto:parramatta.secretary@beekeepers.asn.au)***

---

## ***Beginning in Bees (on-line) training has arrived!***

*By: Robyn Alderton*

We are pleased to announce that the pilot Beginning in Bees (on-line) Training course has commenced. The first intake was capped at 5 to ensure we could work through any technology problems with a small group.

For \$100 per Member, Beginning in Bees Training includes the DPI handbook: Bee Agskills and a hands-on apiary training day. Hands-on training in the apiary will be in line with all COVID-19 restrictions.

There are a series of quizzes to complete where 80% accuracy must be achieved. Course quizzes are open book.

The next in-take will be available in SEPTEMBER. An Eventbrite announcement will be communicated via your email.

## Feature – When to open your hives following winter

By: Arthur Garske, Education Officer

There is no hard and fast rule governing when to open beehives after winter. Several variables will impact the decision of when to undertake the first inspection of the season; climate change, rain, warmer winters and spring winds, among others and each of these will affect what the hive is doing in the area where it is situated.

Bees carefully control the internal temperature of the hive and considerable energy is expended in keeping the temperature as constant as possible. The correct bee space impacts the bees' air conditioning of the hive. When the external temperature is cold, they cluster together tightly. Conversely when the temperature is hot, the cluster expands and is loose. The temperature at which bees cluster is 14 deg C.

Movement of the bees creates heat. The queen and brood are found in the centre of the hive, which has a fairly consistent temperature of 35 deg C. During winter when overnight temperatures are 14 deg C and below, the amount of brood which can be raised is limited. The temperature at which bees chill, fall off the winter cluster and die, is 8 deg C. Thus it is not only warmer days, the major factor is warmer nights.

Local conditions specific to the location of the hive influence early build up, overall strength and the honey flow, eg, available forage, aspect and topography. Obviously these individual conditions will impact hives differently. If the honey flow in the area of a beehive is heavy, the colony can soon run out of room, causing congestion. This is particularly relevant if the hive was "packed down" over winter.

Triggers which contribute to swarming are:

- the season
- the weather
- shade
- ventilation
- temperature
- the area
- the flow
- CONGESTION



Much useful information can be gleaned from observing the bees' behaviour at the entrance of the hive eg, are they landing light or heavy? How many are carrying in pollen?

It is essential to look for pollen carriers mid morning on hot days. Pollen loses its "stickiness" property in the heat, making it difficult for the bees to pack it on their back legs. In mild temperatures, bees can collect pollen all day. The greater the number of bees bringing in pollen, the more brood is being raised.

Experienced beekeepers rely heavily on their **senses** to evaluate conditions in the hive. For example:-

Can you **smell** nectar in the evening? The bees are ripening the nectar collected that day (removing the water content). A slightly sour smell indicates that royal jelly is being fed to the baby bees for the first 3 days of their life after hatching from the egg stage.

**Listen** to the hive. A "roar" indicates the intense activity of fanning that day's nectar collection. Try to estimate the duration of the roar.

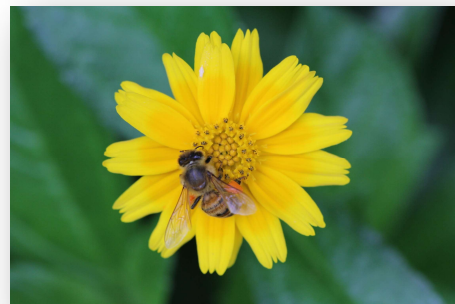
**Look** to see how many bees are clustered on the front and sides of the hive - a large number is suggestive of limited space inside the hive.

Each of the above observations points to the high likelihood of congestion and negate the theory of not opening a hive too early in the season. The first inspection of the season is vitally important to check for disease, the brood pattern and queen cell construction, but bear in mind that it can take 24 hours for the bees to return the brood nest to its pre-inspection temperature.

If you observe queen cells (usually found on the bottom of a frame) and the bees are progressive, the hive may be working toward swarming. Have on hand a spare box, bottom board, lid and drawn comb. During the inspection, remove frames of sealed brood, bees, 1 or 2 frames of honey and pollen and at least 1 frame with eggs and larvae. Be careful not to take the queen. Now break down all of the queen cells but 1. The frame with this cell accompanies the removed frames into the new box. Next, interleave the drawn comb between the remaining brood frames in the original hive. Note that foundation cannot be used as bees cannot secrete wax until the temperature is between 35-37 deg C.

Ensure the location of the new box is at least 4 kilometres away to prevent the bees returning to the original hive. There is the possibility of chilled brood if the overnight temperature is low, however this is the best of 2 options.

In summary, “reading” the hive and conditions in the field are an essential aspect of best beekeeping practice. What the hive is doing will determine what to do next and when.



## **Book donation – Queen Spotting**

*By: Robyn Alderton*

Our club is very fortunate to have very generous members. On behalf of PAB, I would like to thank Jamie Thomson for the donation of the book ‘Queen Spotting’. This book is now part of the PAB Library and I have it on good authority that it’s a great book.



A bit about this book: ‘At the heart of every bee hive is a queen bee. Since her well-being is linked to the well-being of the entire colony, the ability to find her among the residents of the hive is an essential beekeeping skill. In QueenSpotting, experienced beekeeper and professional “swarm catcher” Hilary Kearney challenges readers to “spot the queen” with 48 fold-out visual puzzles — vivid up-close photos of the queen hidden among her many subjects.

## **Free bee biosecurity training course**

*By: Robyn Alderton*

Did you know that there is a free Biosecurity Training course available through Plant Health Australia?



This course is free for Aussie beekeepers to help protect the honey bee industry from pests and diseases. This course was previously only free for commercial beekeepers who had 50 or more hives with others having to pay a small fee. With AHBC funding, this course is now free to all beekeepers. Just click on the following link to Register.

[Plant Health Australia free bee biosecurity training course](#) (accessed 25 August 2020)



## October is AFB Awareness Month

By: Robyn Alderton

**What is the aim of AFB Awareness Month?** AFB affects and kills bees across Australia. It is a notifiable disease. That means you MUST alert the DPI within 24 hours if you find evidence of AFB or think your apiary has been infected. Many beekeepers find AFB tricky to identify.

AFB Awareness month is held every October and aims to:

- highlight awareness of American foulbrood, its impacts and best management practices
- encourage beekeepers to inspect their hives for signs of the disease
- promote reporting of the disease to NSW DPI

The campaign targets beekeepers and is a joint initiative between NSW DPI and the [Amateur Beekeepers Association NSW](#), the [North Shore Beekeepers Association](#), [NSW Apiarists' Association](#) and [Steritech](#).

American foulbrood (AFB) is a fatal and incurable brood disease of European honey bees (*Apis mellifera*). AFB is present in Australia. Any hive can contract AFB and the disease can decimate an apiary. AFB spores are spread through contaminated honey and apiary products, hive parts and equipment. Robbing out of weak hives is a key means of spread. A single infected hive can quickly infect nearby hives as healthy bees rob out the contaminated honey. As more and more hives contract the disease, the cycle perpetuates leading to serious outbreaks that can impact entire regions.

For further information, click on the following link:

[DPI - for further information](#) accessed 25 August 2020

You can test for AFB by [preparing a slide \(PDF, 318.08 KB\)](#) and sending it, along with a [https://www.dpi.nsw.gov.au/\\_data/assets/pdf\\_file/0004/834250/emai-bee-disease-diagnostics-form-July2020.pdf](https://www.dpi.nsw.gov.au/_data/assets/pdf_file/0004/834250/emai-bee-disease-diagnostics-form-July2020.pdf) for diagnosis to:

NSW DPI Laboratory Services

Courier address: Woodbridge Road,  
Menangle NSW 2568

Postal address: Private Bag 4008,  
Narellan NSW 2567, Phone: 1800  
675 623

Email:  
[laboratory.services@dpi.nsw.gov.au](mailto:laboratory.services@dpi.nsw.gov.au)

You can also use a field diagnostic AFB test kit. These are available at beekeeping suppliers.



*Image above: Showing how to conduct an AFB check in a brood cell*

## AFB near me

By: Robyn Alderton

From July 2020 NSW DPI will collate a list of NSW postcodes where American foulbrood (AFB) notifications and detections were reported each month. Please see the table below for July notifications.

**Please note that due to privacy considerations NSW DPI cannot discuss individual cases or provide more precise location information. Submissions where location of the hive was not reported cannot be included in this summary.**

If you keep bees near a reported postcode it is best practice to inspect your colonies for AFB disease as soon as practical.

As of 1 July 2020 it is a condition of registration that all beekeepers in NSW meet their obligations regarding AFB under the Honey Bee Industry Biosecurity Code of Practice. In particular please see sections 4 and 7 of the Code.

- [Further information on AFB management](#)
- [Sampling procedures for bee disease diagnosis \(PDF, 318.08 KB\)](#)
- [EMAI bee disease diagnostics form \(PDF, 472.8 KB\)](#)

If you require further information or support please email [bee.biosecurity@dpi.nsw.gov.au](mailto:bee.biosecurity@dpi.nsw.gov.au) with your request and providing your best contact details and a DPI bee biosecurity officer will contact you.

For further information about AFB near me, click on the following link.

[AFB near me](#) accessed 25 August 2020

Month	Postcodes with reported AFB cases
July 2020	2283, 2515, 2539, 2540, 2800, 2871 4 further reports were received without notifying hive location

## Do you have a warre or flow hive?

By: Robyn Alderton

We would like to add both a warre and flow hive to the apiary however we need members with experience to manage these hives and provide updates on progress and needs as and when required.

Do you have experience in either hive type and would like to help out the club and members? If yes, please contact me on [parramatta.president@beekeepers.asn.au](mailto:parramatta.president@beekeepers.asn.au)

## Are you swarm ready?

Swarm season will be soon upon us.

Those new to beekeeping, are you swarm ready?

Follow the quick checklist below:

1. Are you registered with the DPI?
2. Have you had some **TRAINING** in basic bee handling?
3. Is your **HARDWARE** ready? Bases, boxes, frames and foundation, lids.
4. Do you have some form of **SHB** management organised?
5. Do you have your **GEAR**, ie, bee suit and jacket, smoker, hive tool and brush?
6. Do you have a suitable **LOCATION** to place your hive?
7. Do you have a **MENTOR**?

You must be 'be ready' before you can participate in the Club's swarm program.

Your club will help you get on your way.

### Cost:

Members following completion of PABs training course:	\$85.00
All other Members	\$110.00

The cost above includes 4 frames included in the Nuc box. You must swap the frames from the Nuc box into your own box at the time of pick-up or as arranged by the Member you are picking up from.

When you receive your swarm, you will be invoiced for payment. The invoice will be sent to your email. **DO NOT PRE-PAY FOR YOUR SWARM – YOU WILL BE INVOICED SEPARATELY.**

To advise the club of a swarm call Bill Dick, our swarm collector on: 0497 832 846.

***To receive a swarm via the club, you must be added to the swarm list.  
To be added to the swarm list (to receive a swarm), contact  
Sandy Harrison on: 0448 600 324.***

## Meet my apiary

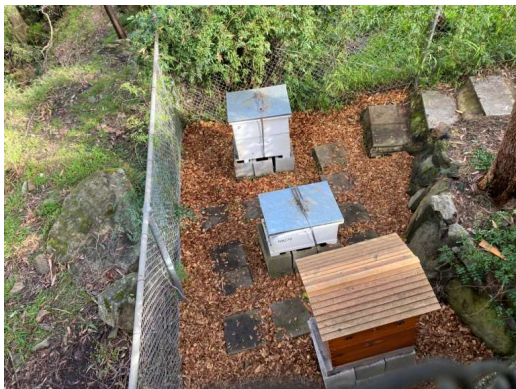
By: Sandy Harrison

I miss seeing you all at our physical monthly meetings so join us at the virtual meetings each month.

We are kicking off a new newsletter segment called: Meet My Apiary

We meet but we know little about each other's hives and apiary. So here goes and I encourage you to send your story to Robyn so we can have one in each monthly newsletter.

This is my sixth season with three hives at my home in Pennant Hills. Luckily we overlook the bush part of Lane Cove National Park. I started with one hive and this first photo shows me assisting Peter Clarke collecting my first swarm.



I market my honey with this sign at the front of my house and have a local customer base who call or text and I deliver.

My label reflects the name of the street I live in where the bees collect their pollen. And the sign gets customers.



My customers include neighbours, casual passers-by, the street sweeper and delivery people. Local walkers increased with COVID-19 lockdown and of course neighbours. One customer in the street sends me a text message sometimes one lady sometimes another then back to the first. Not sure who looks after the guy, kids and the dog in that home?

I must thank Peter Clarke for introducing me to beekeeping and Lod Porretta with Peter always there for support and questions. Finally, my beekeeping mate always there for each other every month in summer Peta Appleroth.

Looking forward to hearing your story, until next month.

Happy Beekeeping and keep safe Sandy Harrison

***Thank you, Sandy – a raffle ticket has your name on it!***



# Club shop

By Lod Porretta, Stores Officer

Due to COVID-19, the club shop is closed however you can [email your order](#) to the Stores Officer.

Submit your order by Monday. The Stores Officer will advise the cost. Payment to be submitted electronically. After clearance of funds in the club account, an advice will be sent and goods can be collected the following Wednesday from Castle Hill (pm).

Members are encouraged to support PAB by purchasing their beekeeping goods from the club shop whenever possible.

Reminder: Club shop purchases entitles you to raffle tickets – drawn in December.

## Special!

The store has a couple of treated, assembled and painted boxes for sale in the shop available for the low price of \$45 each. These boxes are of superior quality, they are:

- Shaped with rounded corners
- Nailed in all dove tails
- Dipped in copper naphthanate to prevent rot
- Primed with oil based anti bleed primer paint
- Box faces painted with two coats of full gloss acrylic paint
- Box edges painted with two coats of full gloss oil-based paint

This product is produced in Australia and made from A-Grade timber.

**A quality product made by beekeepers for beekeepers.**

Members are encouraged to support their club shop and purchase their beekeeping goods from the club shop whenever possible.



Reminder: the store also stocks assembled screened stainless-steel mesh bottom boards.

These bottom boards are made to fit 8 frame boxes and come unpainted.

They include removable slide out tray for lime etc. These screen bottom boards are available for the bargain price of \$41.50.



Shop email: Lod Porretta [parramatta.stores@beekeepers.asn.au](mailto:parramatta.stores@beekeepers.asn.au)

The following items are available to purchase in the Club Shop:

- Beetle Traps
- Cleats
- Foundation
- Gloves
- Honey Gate
- Risers
- Uncapping Boxes
- Bottom Boards
- Chemicals
- Frames
- Hive Closers
- Jackets/Suits
- Smokers
- Boxes
- Eyelets
- Frame Wire
- Hive Locks
- Lids
- Spur Wheels
- Bee Brush
- Electric Embedder
- Glass Jars
- Hive Tools - J
- Plastic Buckets
- Strainers & Cloths

If the item(s) you seek are not listed above, just email your friendly Stores Officer to see if, in fact, the item is in stock.

## **Handy contact details**

<b>Position</b>	<b>Position Holder</b>	<b>Contact Details</b>
President	Robyn Alderton	<a href="mailto:parramatta.president@beekeepers.asn.au">parramatta.president@beekeepers.asn.au</a>
Vice President and Bio Security Officer	Dave Wilson	<a href="mailto:parramatta.vp@beekeepers.asn.au">parramatta.vp@beekeepers.asn.au</a>
Secretary	Dave Wilson	<a href="mailto:parramatta.secretary@beekeepers.asn.au">parramatta.secretary@beekeepers.asn.au</a>
Treasurer	Andrew Bardsley	<a href="mailto:parramatta.treasurer@beekeepers.asn.au">parramatta.treasurer@beekeepers.asn.au</a>
Stores Officer	Lod Porretta	<a href="mailto:parramatta.stores@beekeepers.asn.au">parramatta.stores@beekeepers.asn.au</a>
Apiary Officers	Dave Wilson and Arthur Garske	<a href="mailto:parramatta.secretary@beekeepers.asn.au">parramatta.secretary@beekeepers.asn.au</a> <a href="mailto:awgarske@gmail.com">awgarske@gmail.com</a>
Events Coordinator	Sandy Harrison	<a href="mailto:parramatta.events@beekeepers.asn.au">parramatta.events@beekeepers.asn.au</a>
Member Officer	Steve Alderton	<a href="mailto:parramatta.membership@beekeepers.asn.au">parramatta.membership@beekeepers.asn.au</a>
Colony Distribution Officer	Bill Dick	<a href="mailto:parramatta.swarms@beekeepers.asn.au">parramatta.swarms@beekeepers.asn.au</a>
Education Officer	Arthur Garske	<a href="mailto:awgarske@gmail.com">awgarske@gmail.com</a>
Extractor Custodian Officer - east	Sandy Harrison	<a href="mailto:parramatta.events@beekeepers.asn.au">parramatta.events@beekeepers.asn.au</a>
Extractor Custodian Officer- west	Andrew Bardsley	<a href="mailto:parramatta.treasurer@beekeepers.asn.au">parramatta.treasurer@beekeepers.asn.au</a>

## What's on in 2020

Date	Time/Event	Feature/Comment
9 September	On-line 7.30 pm Parramatta Club Event	September Club Event Presenter: Peter Clarke Topic: All you need to know about swarms and being swarm ready
<i>16 September</i>	<i>6.30 pm Executive Meeting</i>	<i>On-line</i>
14 October	On-line 7.30 pm Parramatta Club Event	October Club Event Presenter: Dave Wilson Topic: What you need to know about replacing a queen
<i>21 October</i>	<i>6.30 pm Executive Meeting</i>	<i>On-line</i>
11 November	On-line 7.30 pm Parramatta Club Event	November Club Event Presenter: TBC Topic: Apiary management over the heat of summer - TBC
<i>18 November</i>	<i>6.30 pm Executive Meeting</i>	<i>On-line</i>
9 December	6.00 pm Parramatta Club Event	December Club Event Christmas fun – details to come and there will be PRIZES! Raffle drawn!
<i>16 December</i>	<i>6.30 pm Executive Meeting</i>	<i>On-line – over summer management plan for the apiary and 2021 planning</i>

**Disclaimer** – Parramatta Amateur Beekeepers Inc and contributors to this Newsletter disclaim all responsibility for any losses that may be attributed to the use or misuse of any material mentioned in the Newsletter of the Parramatta Amateur Beekeepers Inc. The opinions expressed by the contributors to the Newsletter are not necessarily those held by the Executive of the Parramatta Amateur Beekeepers Inc.